

Pond View Heights

Luxury Apartments



Contact Information: 507-345-8882, www.lormarproperties.com

Amenities

- Pristine location in quiet neighborhood within walking distance of Madison Avenue businesses
- Surrounded on two sides by woods and four acre pond
- Scenic large back porch and picnic area leading to the pond/park/wooded hiking trails
- Large community room with kitchen/breakfast bar/lounge area/large screen TV
- Large modern fitness center complete with numerous equipment pieces and an entertainment system
- Underground heated parking garage (1 stall per unit), above ground parking lot for extra spaces
- Car wash station in underground garage
- Security building with locked entrance and common area cameras

Units

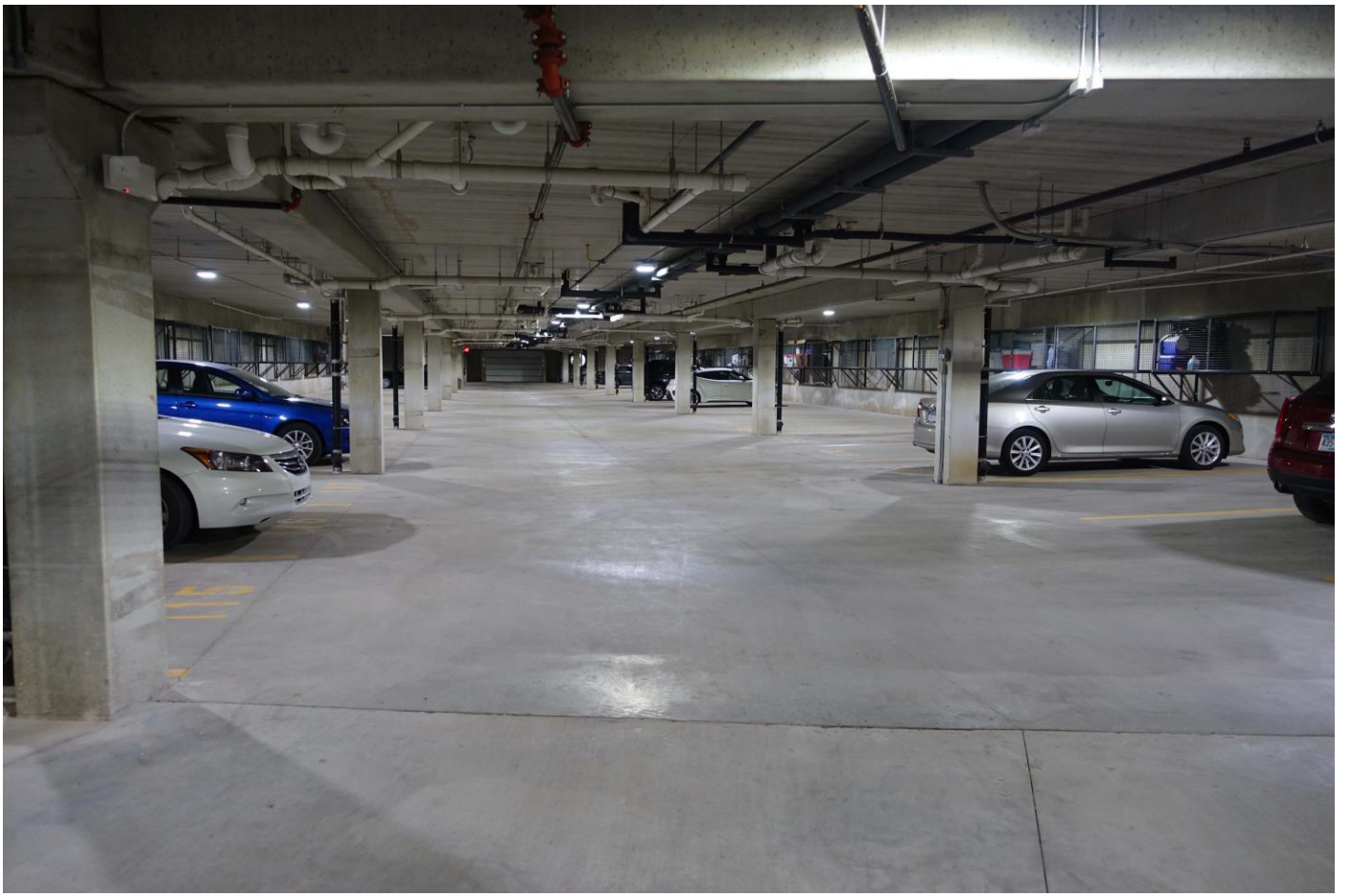
- Central air conditioning
- Upscale kitchen cabinetry w/dimmable under cabinet lighting/granite counter tops/recessed kitchen lighting/breakfast bar with overhead pendant lighting/dishwasher/flat top cook stove
- In unit washer-dryer
- Balcony/patio
- Master bedroom with separate bath and walk-in closet options available (2 & 3 bedroom units)
- Bathroom: tub/shower combination, poured marble sink/counter top
- One year lease converting to monthly on renewal: One month security deposit
- Landlord pays: Heat, HD/DVR cable TV (>95 channels), high speed 250 mbs internet, water, trash
- Tenant pays: Electric, phone, upgrades to cable TV service
- Pet friendly: quiet small cats & dogs (size < 25 lbs; breed and size must be approved by landlord), two maximum of 2 cats or 1 dog 1 cat, \$400 pet cleaning fee; other pets allowed only on written approval: guidelines are quiet small birds, < 20 gallon aquarium, no mice/rats/reptiles

Unit types	Rent/Mo.	Square Feet
Floor Plans A/A1/A2: 1 Bedroom / 1 Bathroom	\$1,500	762
Floor Plan A (Galley kitchen): 1BR / 1 Bathroom	\$1,475	762
Floor Plan B: 1 Bedroom + Den / 1 Bathroom	\$1,575	852
Floor Plans C/C1/C2: 2 Bedroom / 1 Bathroom	\$1,700	1,057
Floor Plan C (Galley kitchen): 2 Bedroom / 1 Bath	\$1,700	1057
Floor Plan D: 2 Bedroom / 2 Bathroom	\$1,700	1,057
Floor Plan E: 2 Bedroom / 2 Bathroom	\$1,875	1,203
Floor Plan F: 2 Bedroom / 2 Bathroom	\$1,875	1,201
Floor Plan G: 3 Bedroom / 2 Bathroom	\$1,975	1,382
Floor Plan G1: 3 Bedroom / 2 Bathroom	\$1,975	1,387
Floor Plan H: 3 Bedroom / 2 Bathroom	\$1,975	1,352
Floor Plans J/J1: 1 Bedroom / 1 Bathroom	\$1,700	1,048

Rent includes: Heat, water, trash, cable, internet, DirecTV/HBO/Cinemax/Showtime and underground parking stall











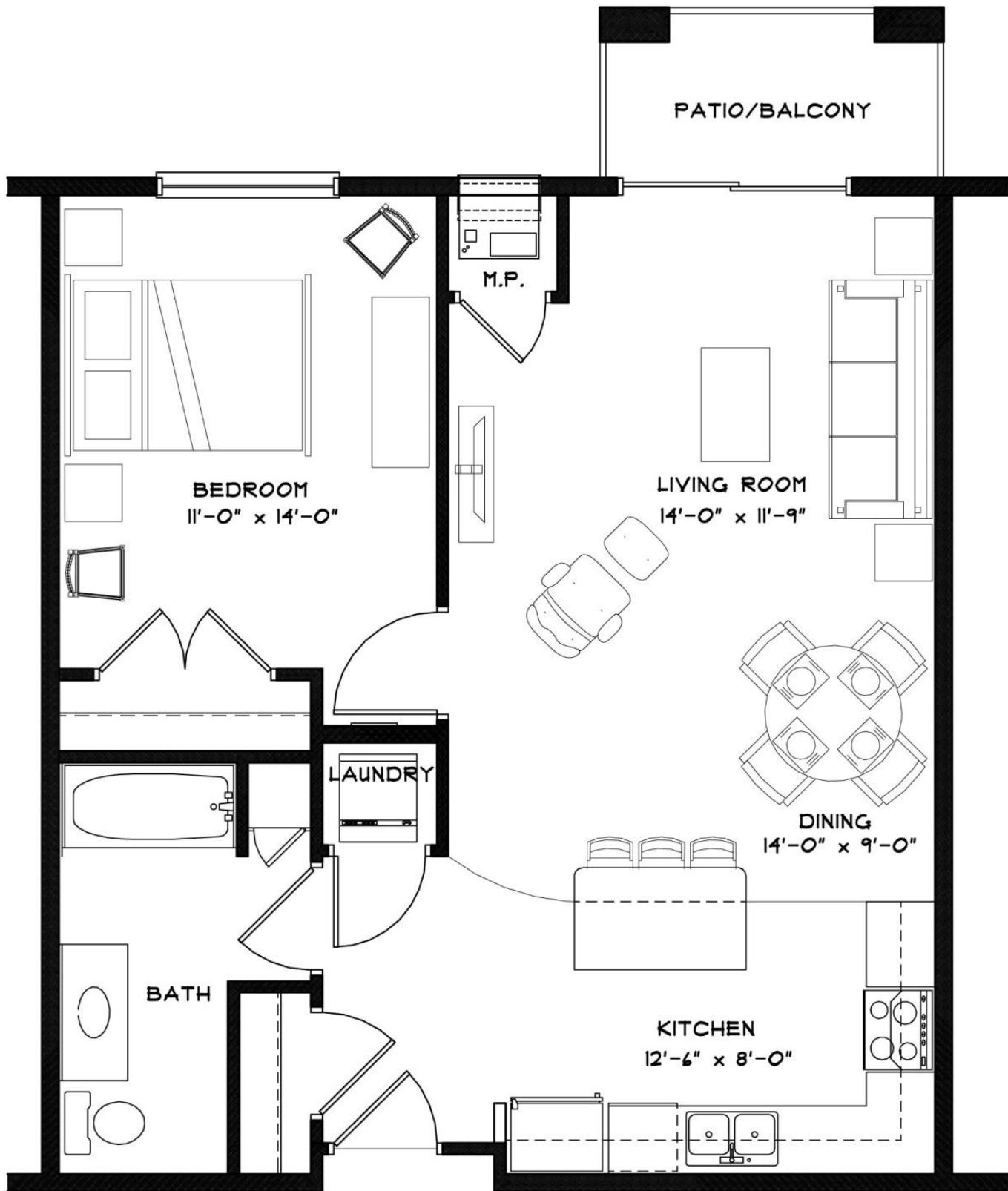








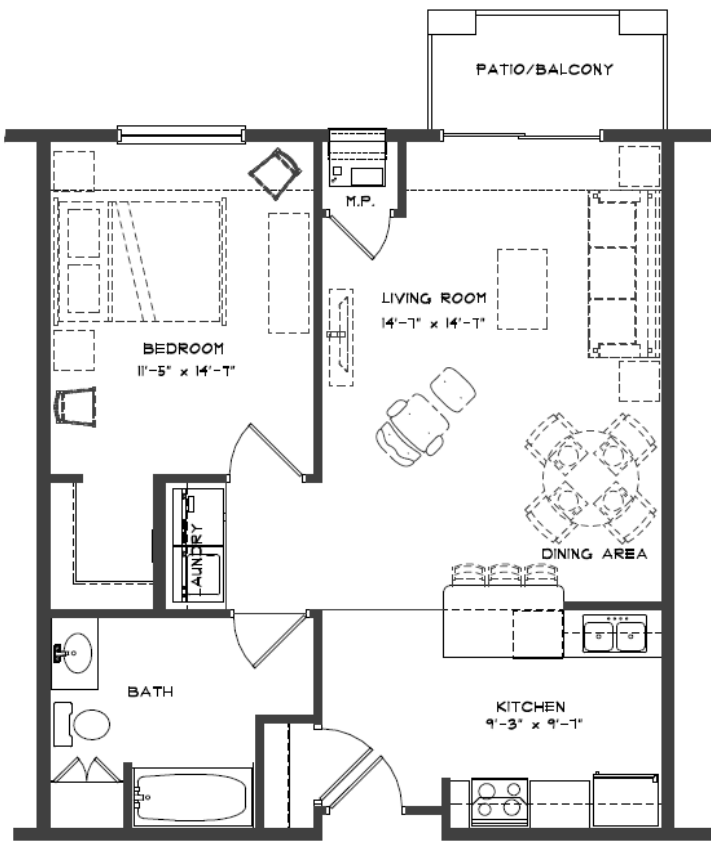




UNIT "A" FLOOR PLAN

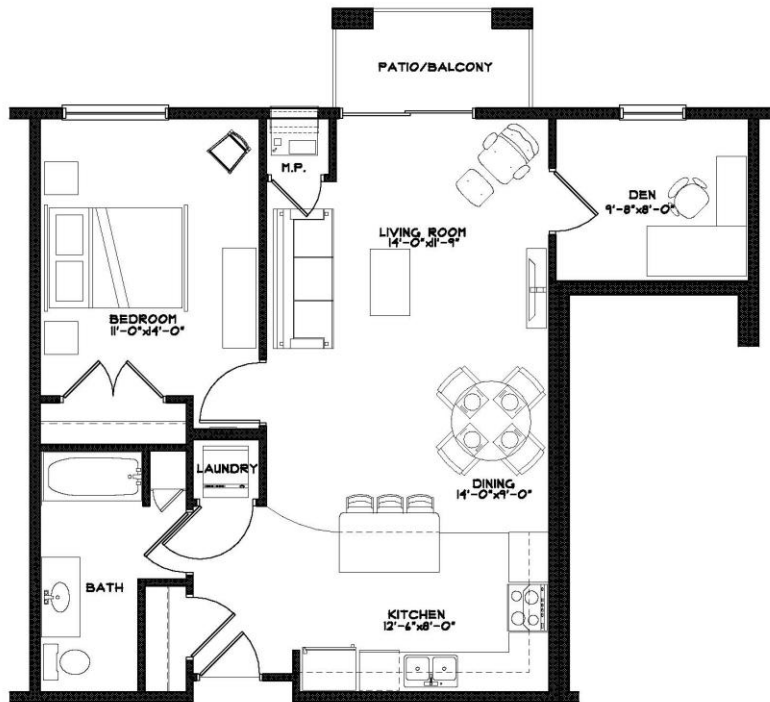
1 BED | BATH

762 S.F.



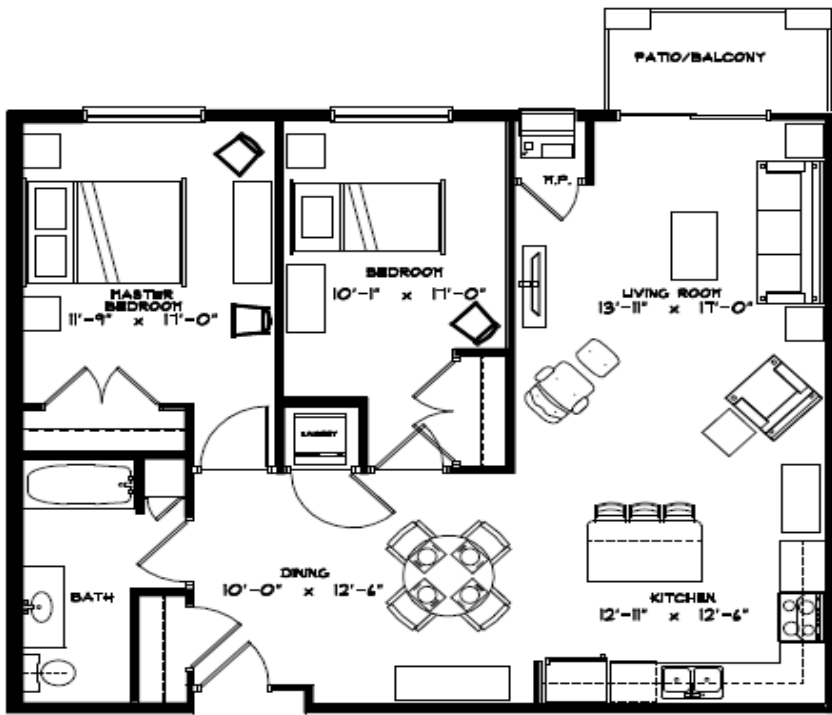
UNIT "A.2" FLOOR PLAN

1 BED | BATH (0) TOTAL TYPE "A" 762 S.F.

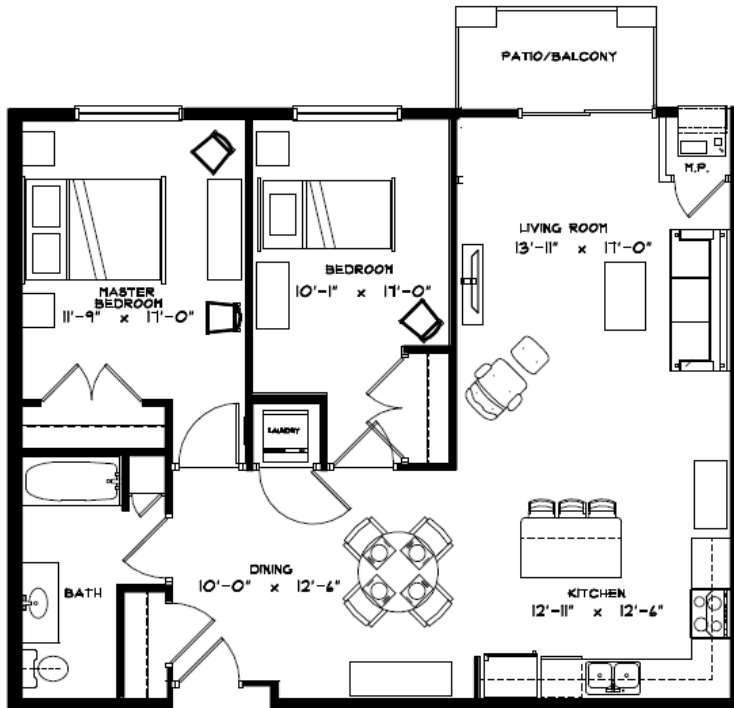


UNIT "B" FLOOR PLAN

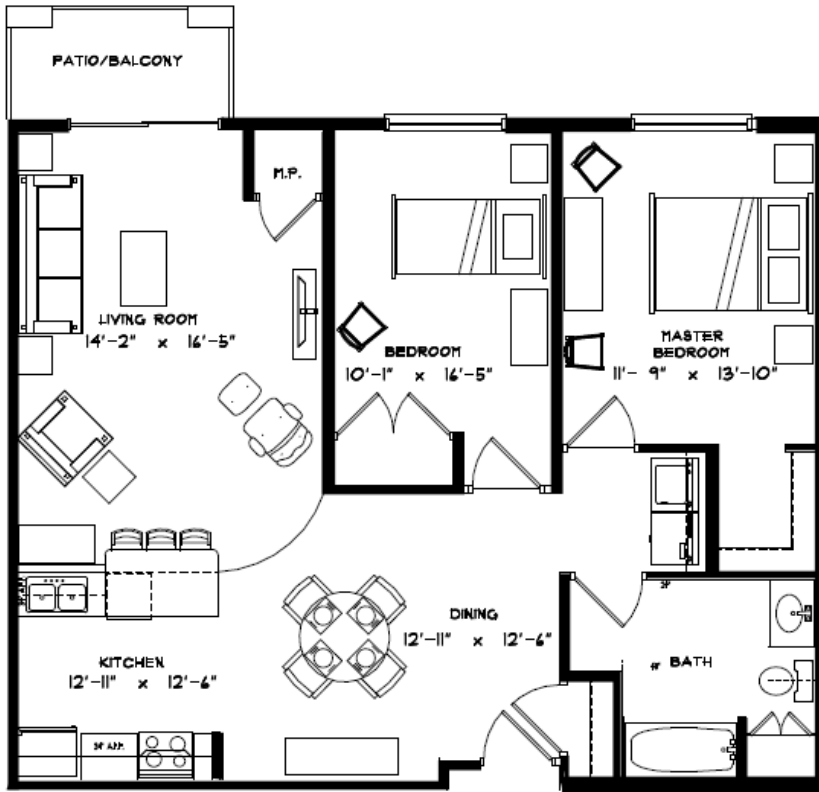
1 BED | BATH w/ DEN 852 S.F.




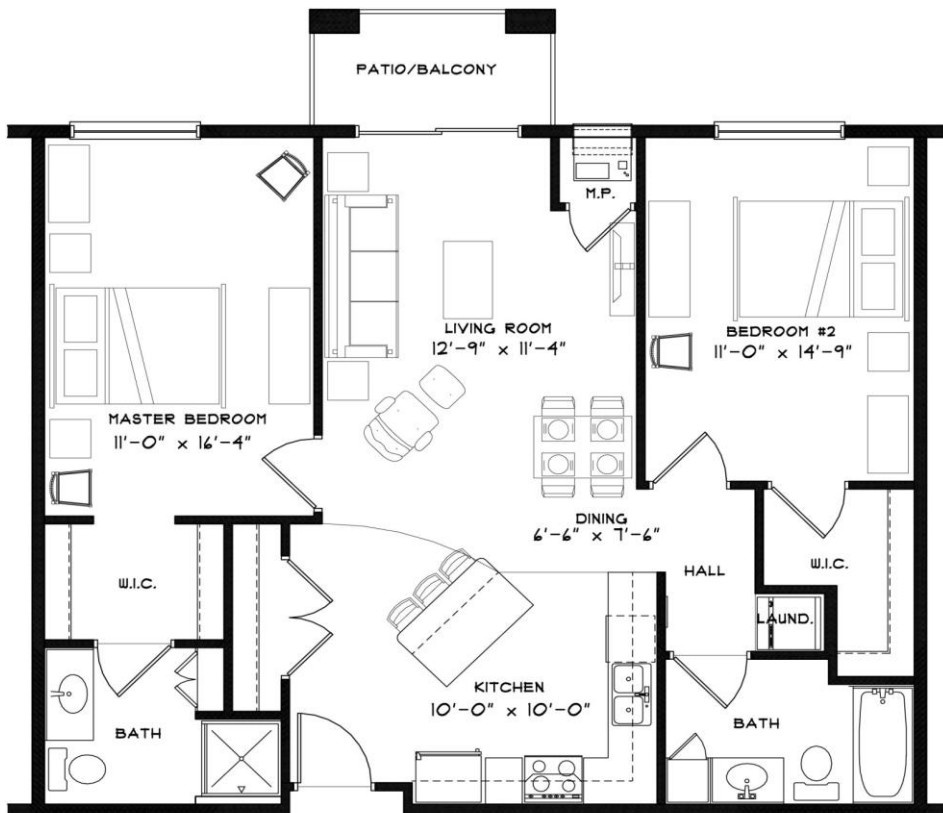
UNIT "C" FLOOR PLAN
 3 BED 1 BATH 1,051 S.F.



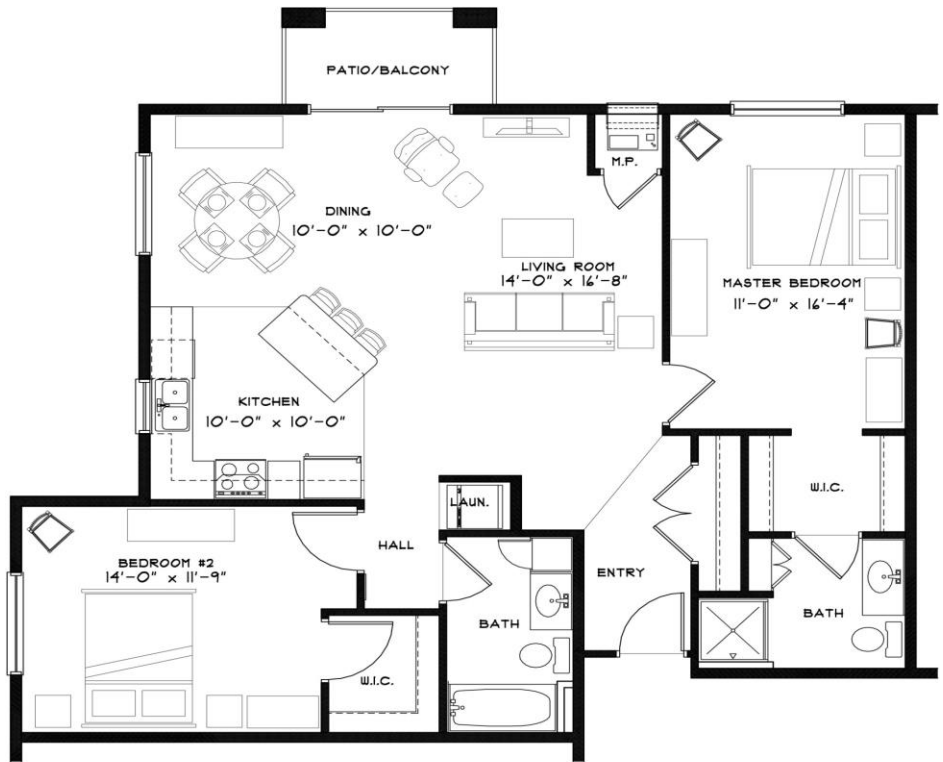
UNIT "C.1" FLOOR PLAN
 2 BED 1 BATH 1,051 S.F.



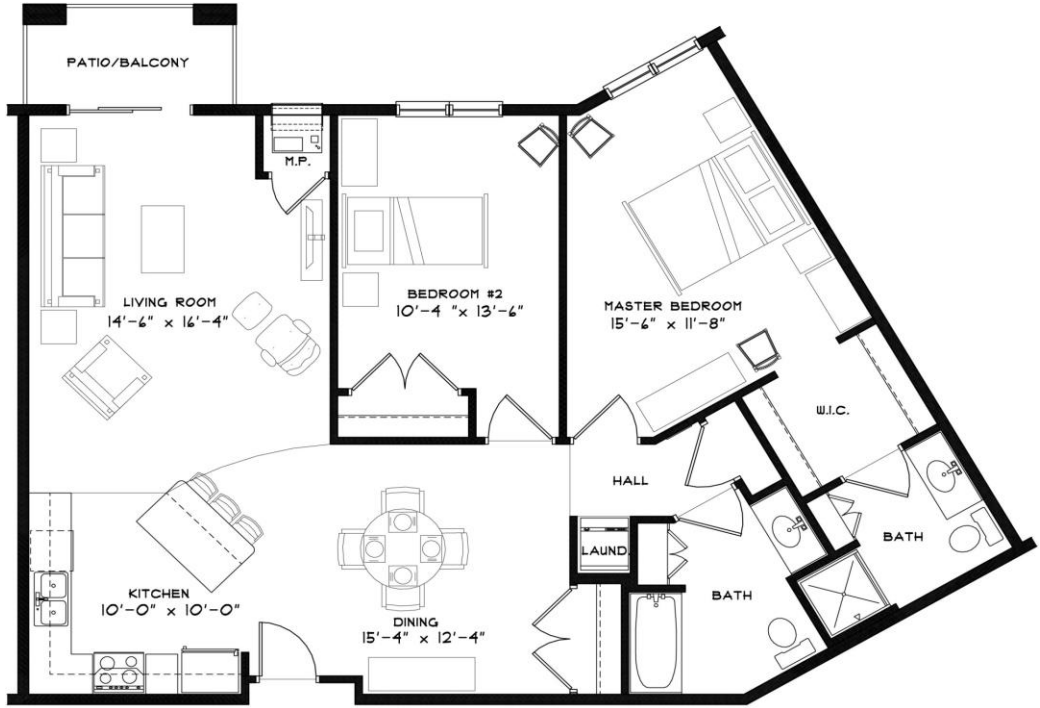
 UNIT "C.2" FLOOR PLAN
2 BED 1 BATH 1,051 S.F.



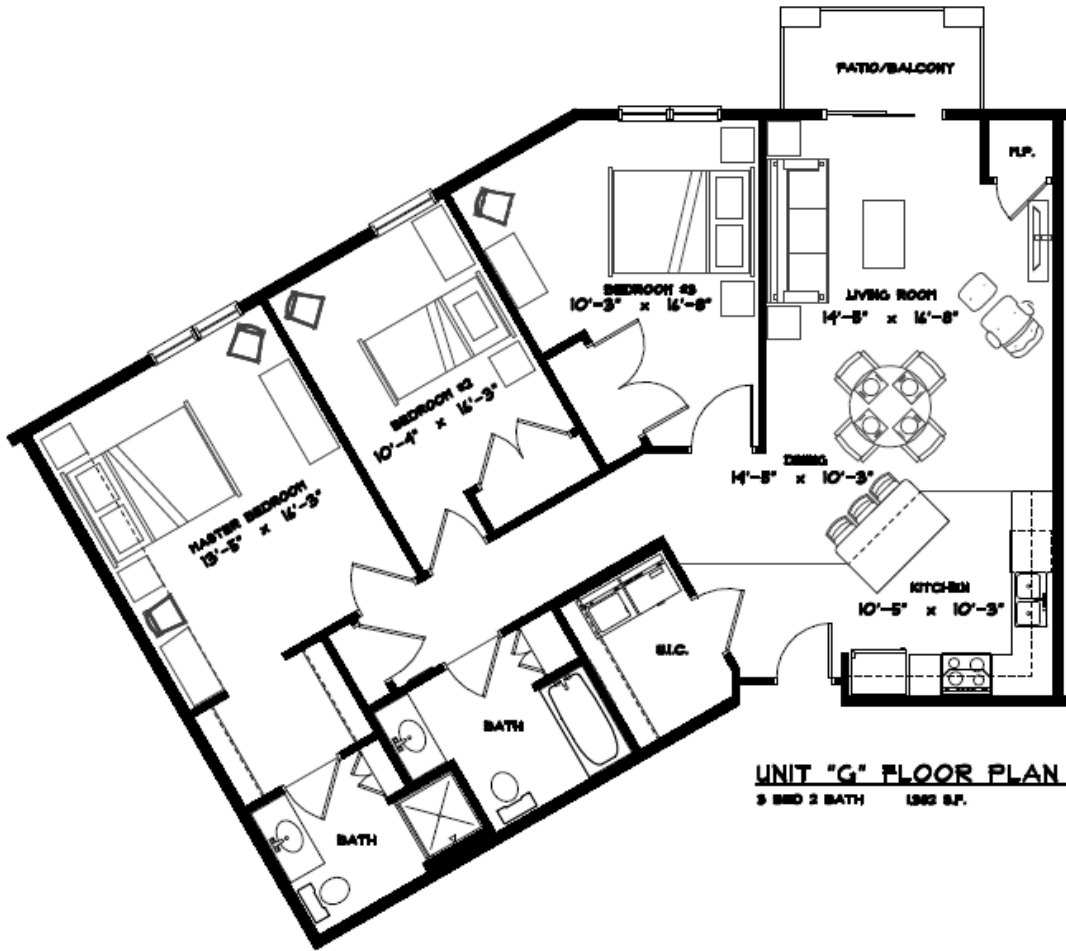
UNIT "D" FLOOR PLAN
2 BED 2 BATH 1,051 S.F.



UNIT "E" FLOOR PLAN
 2 BED 2 BATH 1,203 S.F.



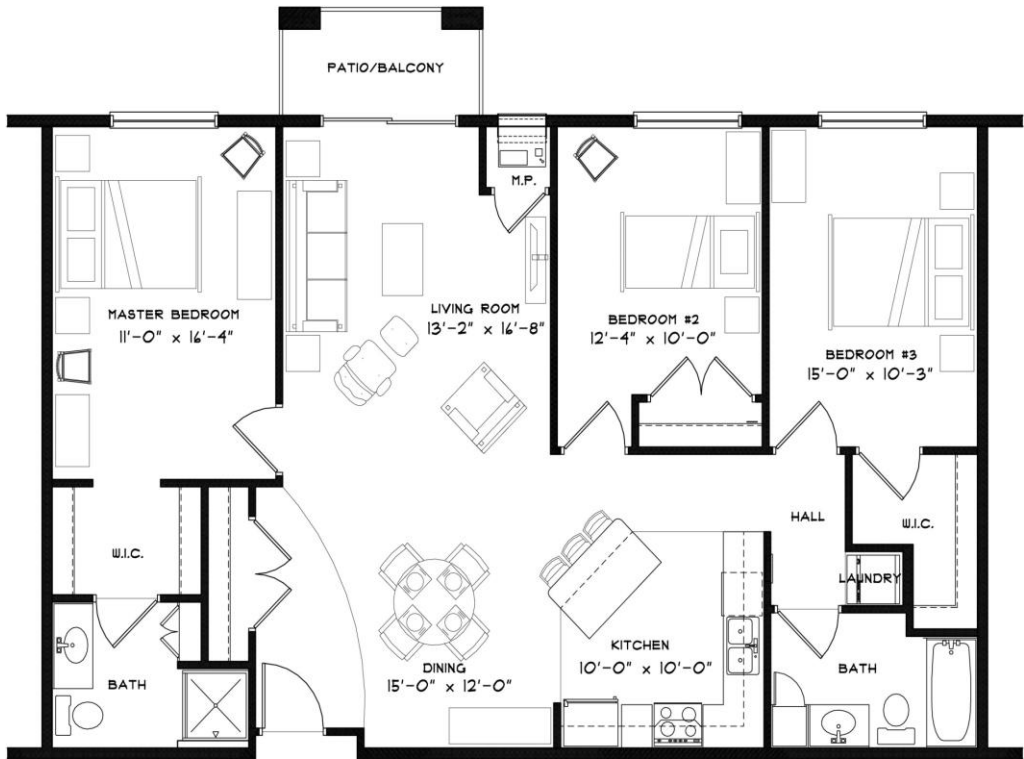
UNIT "F" FLOOR PLAN
 2 BED 2 BATH 1,201 S.F.



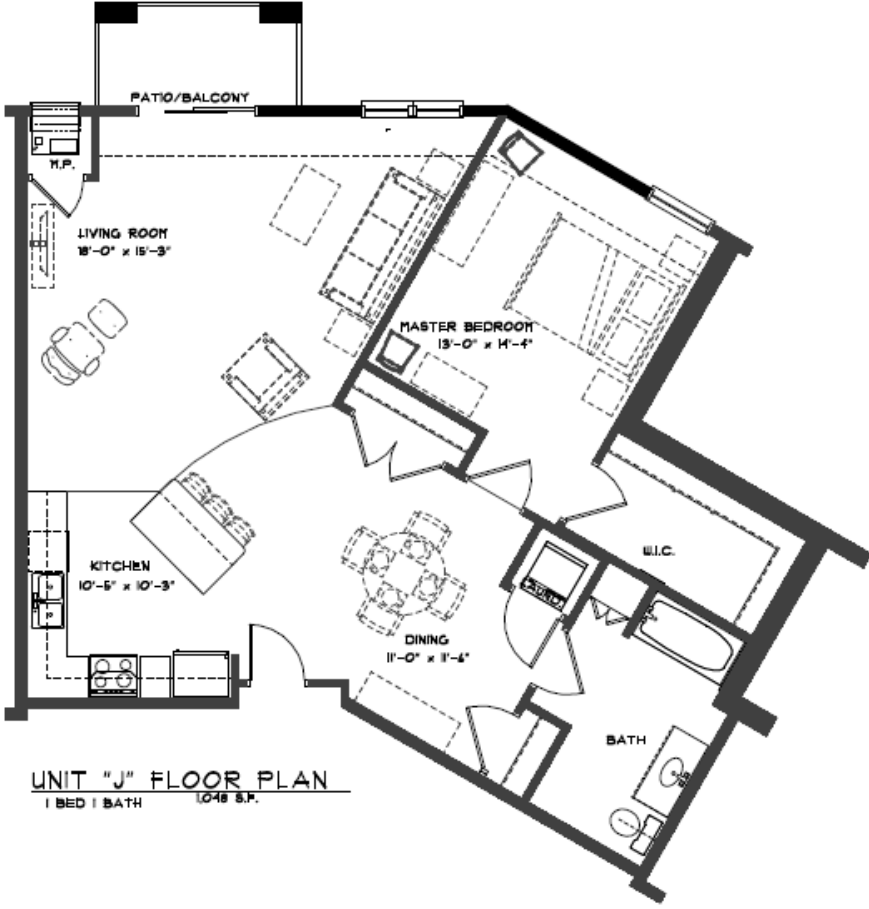
UNIT "G" FLOOR PLAN
 3 BED 2 BATH 1362 S.F.



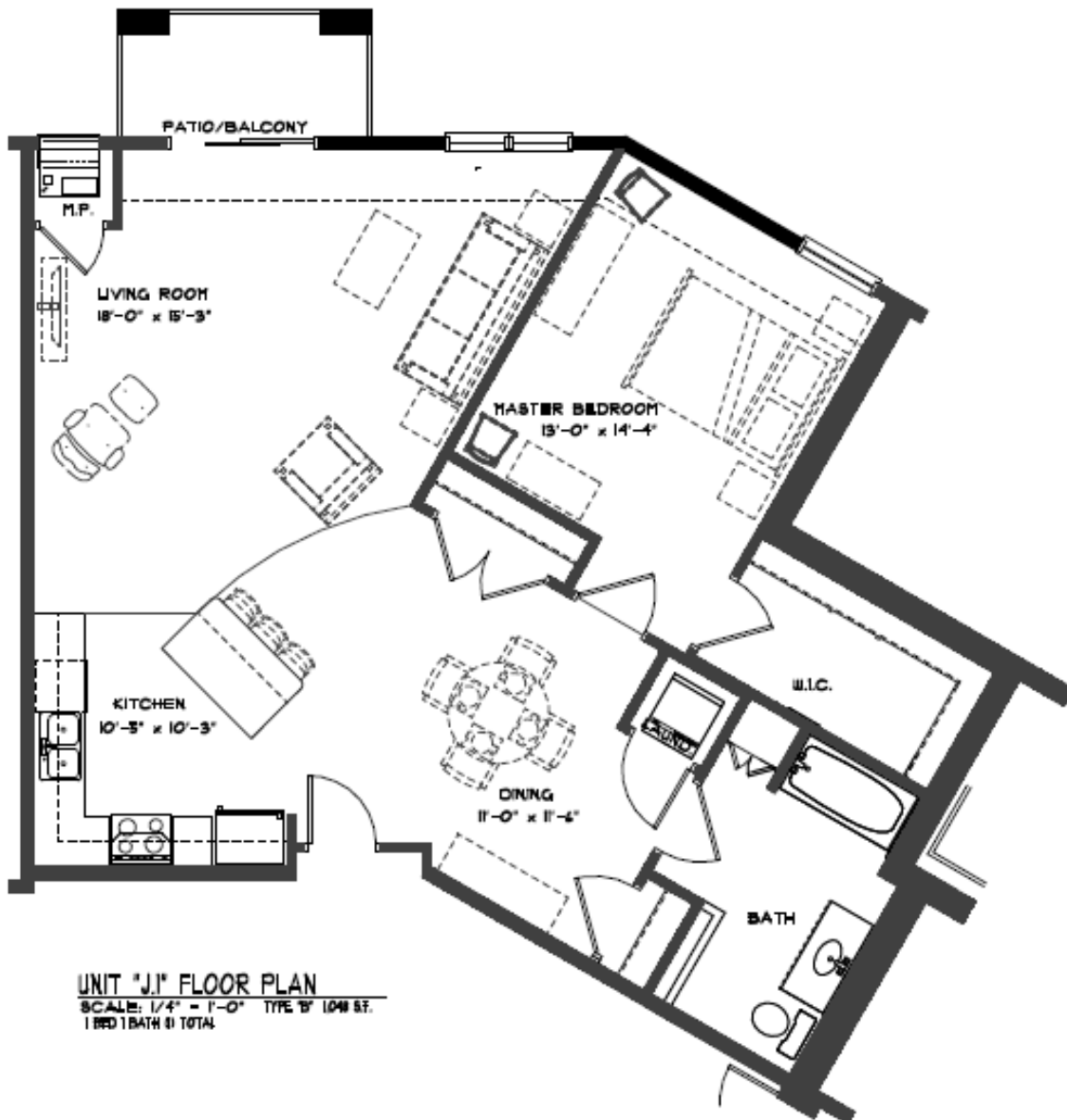
UNIT "G" FLOOR PLAN
 3 BED 2 BATH 1362 TOTAL 1716 S.F. UNIT EX.



UNIT "H" FLOOR PLAN
 3 BED 2 BATH 1,352 S.F.



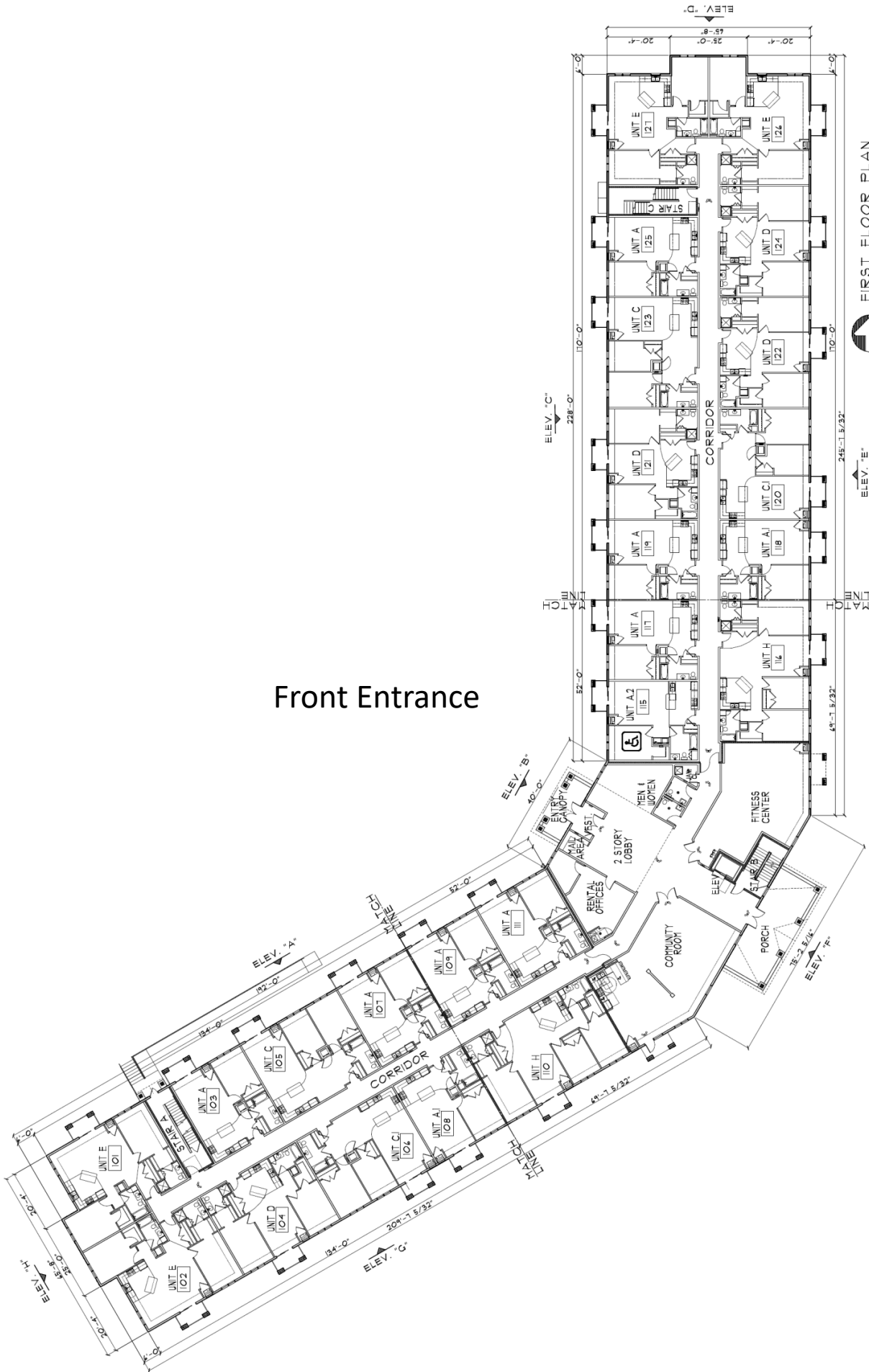
UNIT "J" FLOOR PLAN
 1 BED 1 BATH 1,048 S.F.



UNIT 'J' FLOOR PLAN
 SCALE: 1/4" = 1'-0" TYPE 'B' 1048 SF.
 1 BED 1 BATH @ TOTAL

First Floor

North Ravine



Front Entrance

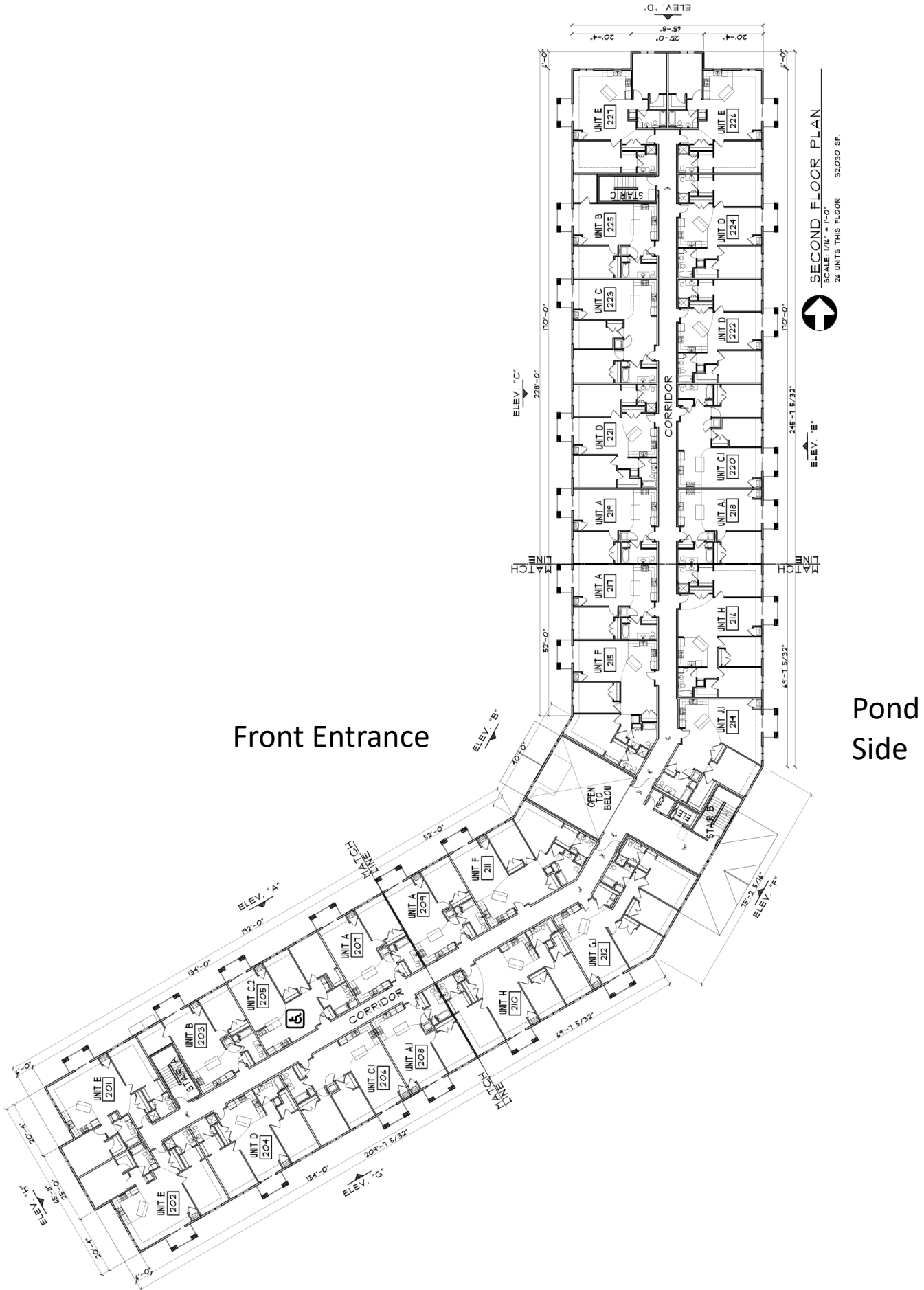
Pond Side

FIRST FLOOR PLAN
SCALE 1/4" = 1'-0"
24 UNITS THIS FLOOR
32,090 SF.



Second Floor

North Ravine



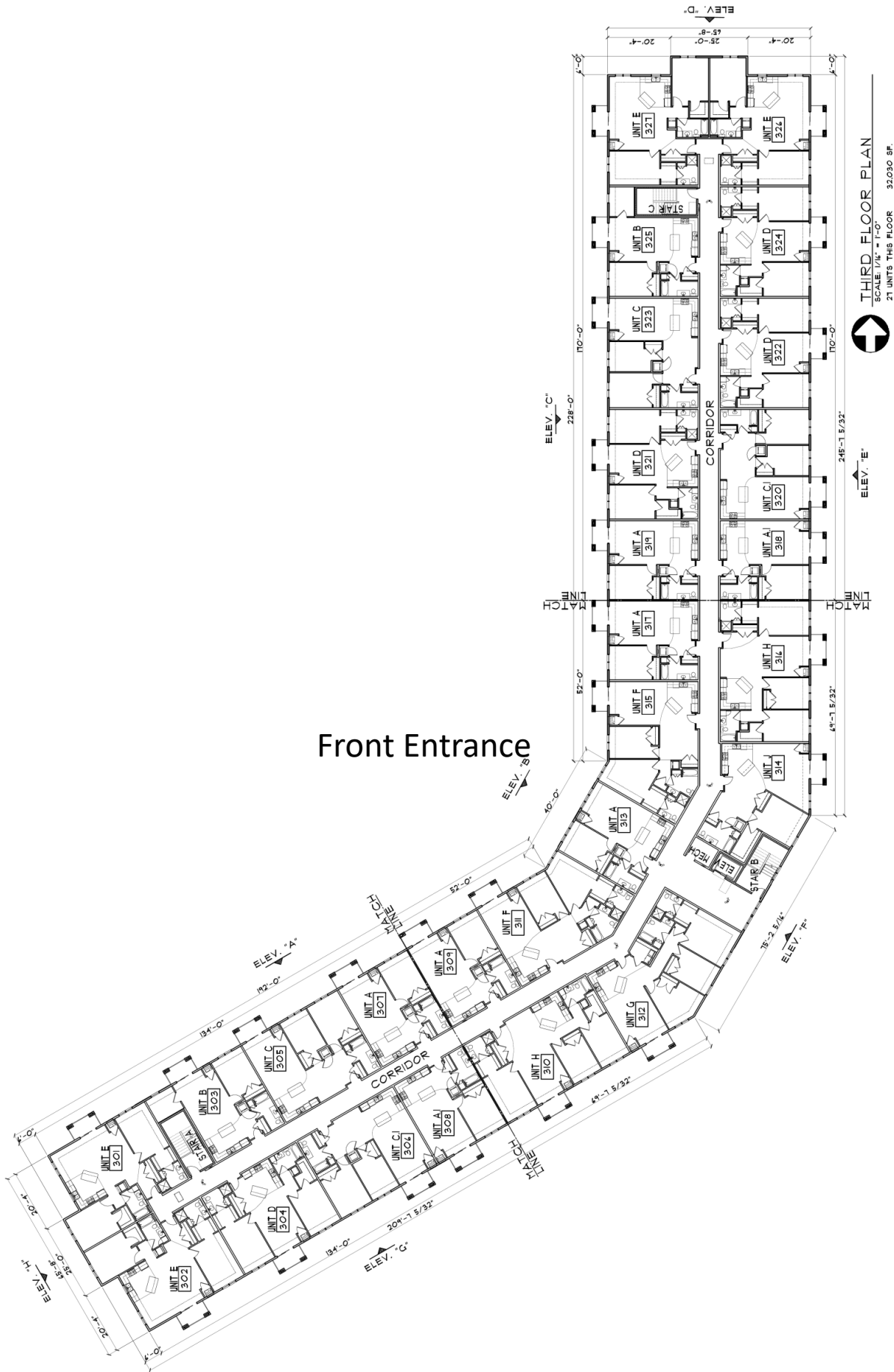
Front Entrance

Pond Side

SECOND FLOOR PLAN
SCALE: 1/8" = 1'-0"
24 UNITS THIS FLOOR 32,030 SF

Third Floor

North Ravine



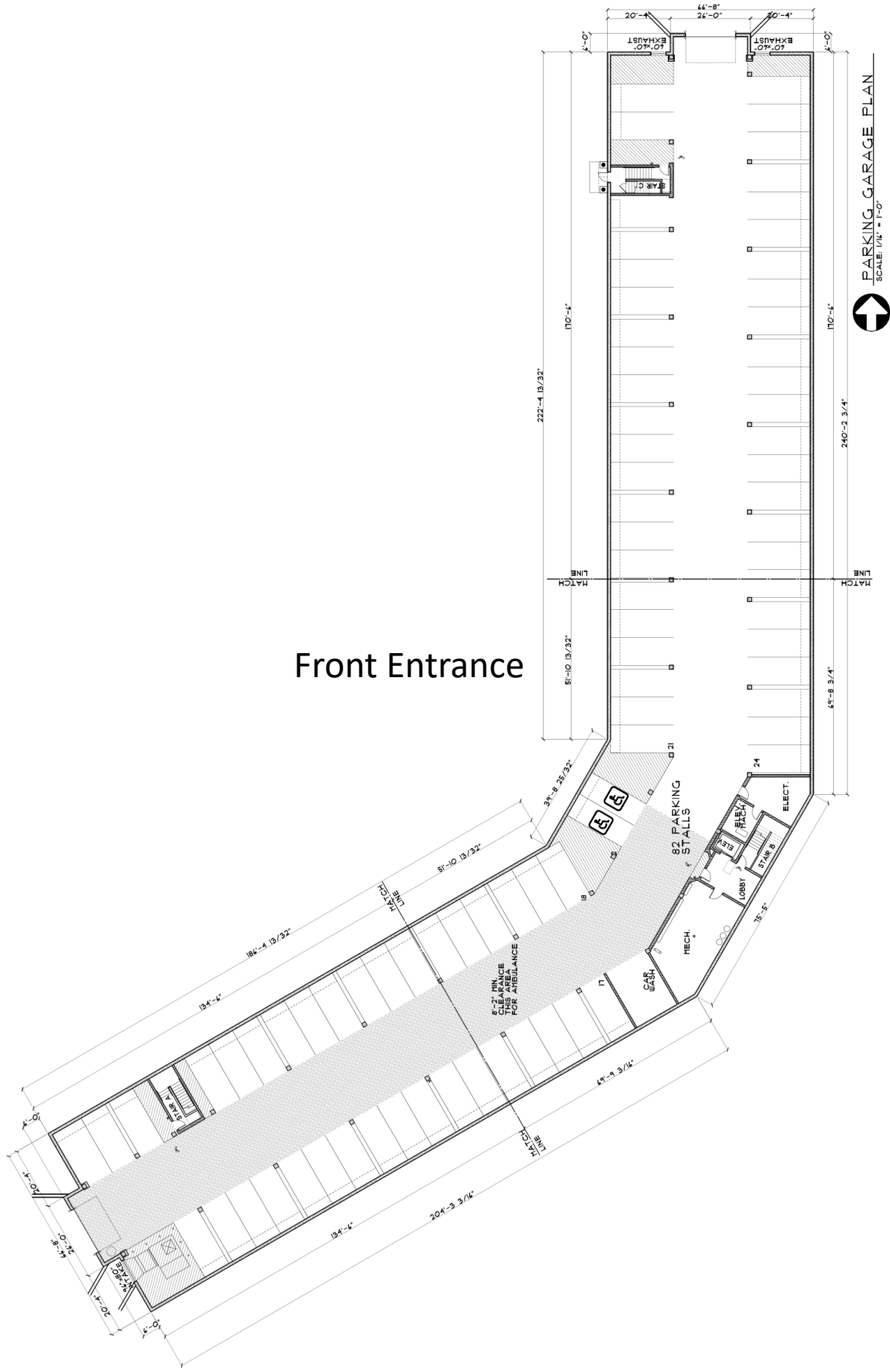
THIRD FLOOR PLAN
SCALE: 1/4" = 1'-0"
21 UNITS THIS FLOOR 32,030 SF

Front Entrance

Pond Side

Underground Garage

North Ravine



Front Entrance

Pond Side

PARKING GARAGE PLAN
SCALE 1/4" = 1'-0"